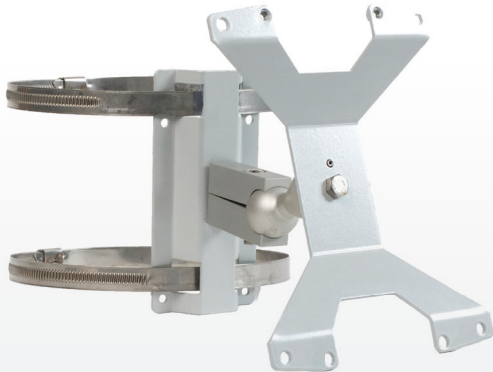


ADJUSTABLE MOUNTING SET

| With adjustable arm for TRANSIT Entry or uPASS Reach



KEY FEATURES:

- Adjustable pole or wall mounting
- Flexible mounting
- For TRANSIT Entry or uPASS Reach

Adjustable Mounting Set

With the adjustable mounting bracket, the TRANSIT Entry or the uPASS Reach can be adjusted at the desired angle and direction to ensure reliable reading. It can also be used for mounting the reader to round or square posts.

This mounting set allows for flexible mounting of the TRANSIT Entry or uPASS Reach to any wall or pole. The mounting set easily attaches to the back of the reader. The ball and socket joint can be used to adjust the reader's orientation. Tighten the hex screw on top of the joint to fix the correct orientation.

Dimensions

Maximum diameter for round posts 133mm (5.19 inch)

Maximum diameter for square posts 100mm (3.9 inch)

SPECIFICATIONS

| Technical information | Ajustable Mounting Set |
|-----------------------|--|
| Material | Powder coated aluminium |
| Color | Grey |
| Pole dimensions | Maximum diameter for round posts 133mm (5.19 inch) Maximum diameter for square posts 100mm (3.9 inch) |
| Compatible readers | 9876200 TRANSIT Entry 9942319 uPASS Reach (region 1) 9945466uPASS Reach (region 2 & 3) |
| Part number | 9875840 Adjustable Mounting Set |